

PROTECTING COMMUNITIES FROM HARM THROUGH POSITIVE POLICING OF THE ROADS

Reducing the risk of harm



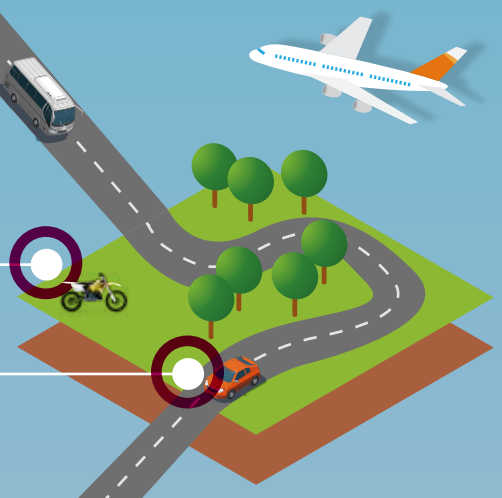
Risk to Community

Car

- + Drink Drive
- + Drug Driving
- + Careless
- + Speed
- + Seat belts
- + Mobile Phone
- + Dangerous

Bikes

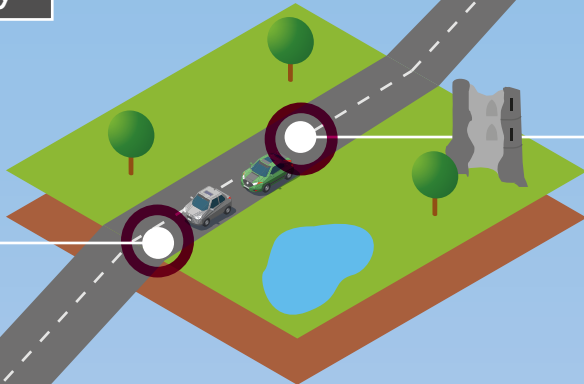
- + Anti Social Behaviour
- + Street Robbery
- + Poor Riding Behaviour



Risk to Community

Car

- Older Driver**
- + Dementia
- + Eye sight
- + Failure to Judge Speed of Passing Vehicles



Risk to Community

Car

- OCG**
- + CSE
- + PWITS
- + Drug driving
- + Mobile phone
- + Excess Speed
- + Weapons
- + Op Raptor



Risk to Community

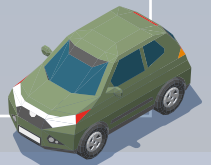
Car

- Young Drivers**
- + Drug Driving
- + Speeding
- + ASB
- + Distraction



Car

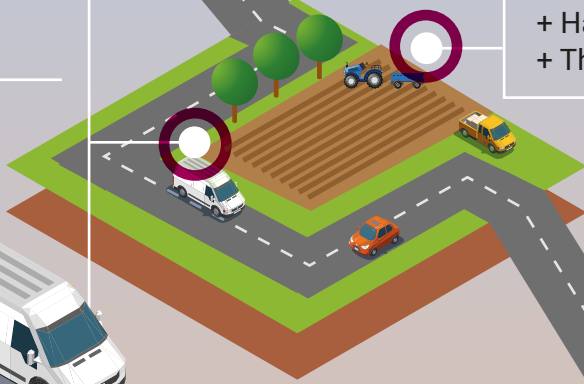
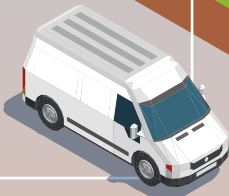
- Theft of MV**
- + Burglary
- + Speeding
- + Clone
- + Drug Driving
- + MOWP
- + PWITs



Risk to Community

Van

- + Modern Slavery
- + Artifice Burglary
- + Theft – Metal
- + Drug Driving
- + HMRC Offences
- + Mobile Phone
- + Hidden Economy



Risk to Community

- + Hare Coursing
- + Theft of Plant



Risk to Community

HGV

- + Drug smuggling
- + Anti Terrorism
- + Immigration Offences
- + Drug smuggling Anti Terrorism
- + Immigration Offences
- + Illegal entry to UK
- + Arms smuggling
- + Human trafficking
- + Tobacco
- + Drugs Smuggling
- + HMRC
- + Smuggling
- + Support OCG
- + Drivers hours
- + Mechanical

